

# Supporting a Healthier and More Productive Workforce

United Way, in partnership with FamilyWize, offers a prescription savings program as a great supplement to your company's wellness program.

## The FamilyWize Prescription Savings Card:

- Is *free* to everyone – it's like a coupon that you can use as often as you want!
- Guarantees the best price – FamilyWize discount, insurance or pharmacy price – just show the card
- Covers all FDA approved prescription medications
- Saves an average of 43% on prescriptions
- Is easy to use with no registration or eligibility criteria
- Has unlimited use at over 60,000 pharmacies nationwide

## Employer Should Know:

- This program does not require any administration paperwork or maintenance records.
- Employees with questions not answered by the FAQs should be referred to our website for additional information or to FamilyWize customer care team.
- The card provides immediate prescription assistance for:
  - a. New Hires
  - b. Part Timers
  - c. Employees' dependents
- Many employers include a card in the employee orientation packages.
- Lowest price is guaranteed among insurance, discounted price with FamilyWize or pharmacy retail price.

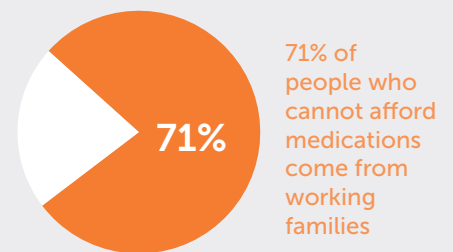
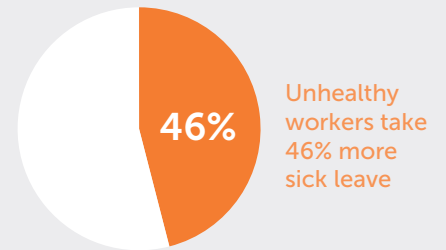
## Get Started Today!

- Introduce FamilyWize to your employees
- Hand out free FamilyWize Prescription Savings Cards
- Hang poster in employee areas to remind them to save on their medications
- Make extra cards available in common areas for employees to share with their family

Use FamilyWize to help your employees be smart shoppers with their prescription medications!



**Medication Costs Everyone!**  
 Cost is the #1 reason why people do not take their medications.



If you have any questions about the program, or would like additional materials or support, please contact us: 800.222.2818 or [info@familywize.org](mailto:info@familywize.org).



Here are a few frequently asked questions that your employees might have.

**1. If I have insurance, why would I need this?**

By showing your FamilyWize card in addition to your insurance card, you can ensure that you are getting the best possible price on your prescription.

**2. How will this help me?**

FamilyWize can help you save money if your prescription medication costs are high.

**3. How often can I use the FamilyWize card?**

- Card use is unlimited; you can use it every time you fill a prescription.
- If you lose your card, you can easily get another by going to familywize.org or downloading the FamilyWize app.
- You can share your card with family and friends to pass on the savings.

**4. What is the Drug Price Lookup Tool?**

Drug prices vary by pharmacy. The FamilyWize Drug Price Lookup Tool is provided free of charge on familywize.org and via the free FamilyWize app. By entering the name of your medication and your zip code, you can see which local pharmacies have the best FamilyWize price prior to filling your prescription.

**5. Aren't there other prescription discount savings cards? How is FamilyWize different?**

**FamilyWize:**

- Passes 100% of the negotiated savings onto the individual.
- Is free – it's like a coupon that you can use as often as you want!
- Provides an easy-to-use Drug Price Lookup Tool so you know the price prior to filling your prescription.
- Offers a free app for download so you can have the card with you at all times.
- Does not require registration or have eligibility criteria. However, by registering, you can receive additional information and value.

FamilyWize also provides a Drug Price Lookup Tool for your employees to see their savings on each prescription and the pharmacy with the best price. The tool is available at familywize.org and is also included with the free app.

